



High Street, Roydon, CM19 5EA

Geoffrey Matthew Estates are delighted to offer this rarely available, split level, two bedroom maisonette, situated in a prominent high street position, in a characterful Grade II listed building, located in the highly sought after and historic village of Roydon. Offering spacious and versatile living accommodation including double bedrooms, open plan living, kitchen and dining area and a well proportioned bathroom. The maisonette also enjoys the benefits of a private courtyard garden, allocated parking bay and an en-bloc garage with power connected.

Ideally located to access the local primary school, amenities and mainline train station, this property is certain to prove popular so early viewings are very highly recommended!

Offers In The Region Of £345,000

High Street, Roydon, CM19 5EA



- Split Level Maisonette
- Garage With Power Connected
- Close To Mainline Train Station
- Share Of Freehold (Underlying Lease In Excess Of 900 Years)
- Allocated Parking Bay
- Village Location
- Private Garden
- Low Service Charges & No Ground Rent

Entrance Lobby

Open Plan Living Area

27'7 x 12'7 (8.41m x 3.84m)

Open Plan Kitchen Area

Bathroom

7'1 x 9'5 (2.16m x 2.87m)

Landing Area

Bedroom

12'2 x 12'7 (3.71m x 3.84m)

Bedroom

10'11 x 9'8 (3.33m x 2.95m)

Private Garden

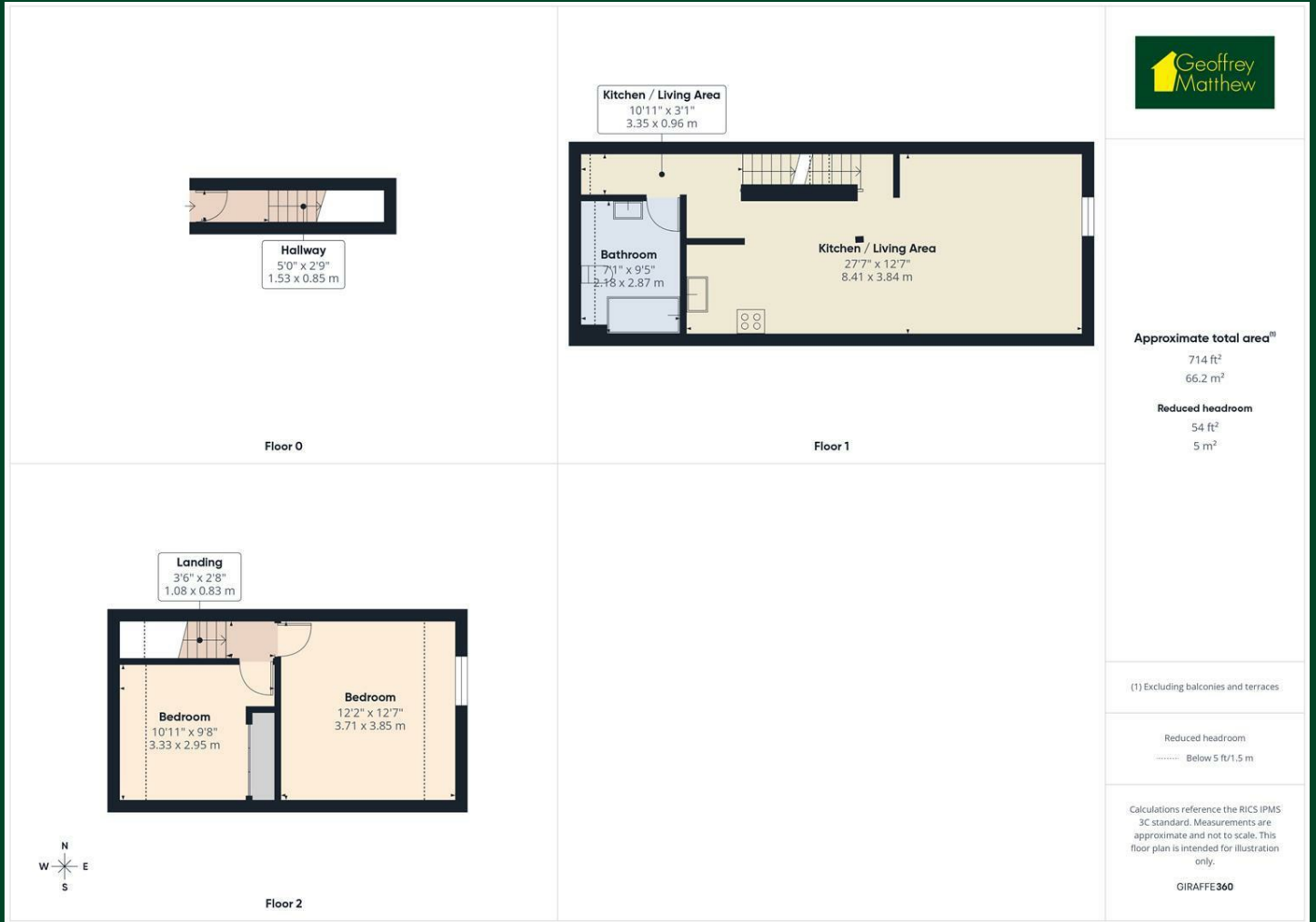
Garage



Directions



Floor Plan



Council Tax Details

Epping Forest Band C

These particulars, whilst believed to be accurate are set out as a general outline only for guidance and do not constitute any part of an offer or contract. Intending purchasers should not rely on them as statements of representation of fact, but must satisfy themselves by inspection or otherwise as to their accuracy. No person in this firm's employment has the authority to make or give any representation or warranty in respect of the property.

